



# Trouble shooting in SAP configuration

Product of  
[www.sapficoconsultant.com](http://www.sapficoconsultant.com)

In this document we try to list down how you will trouble shoot missing configuration steps. We take up broadly 3 types of cases which you will come across after having done the basic configuration.

Read on.....

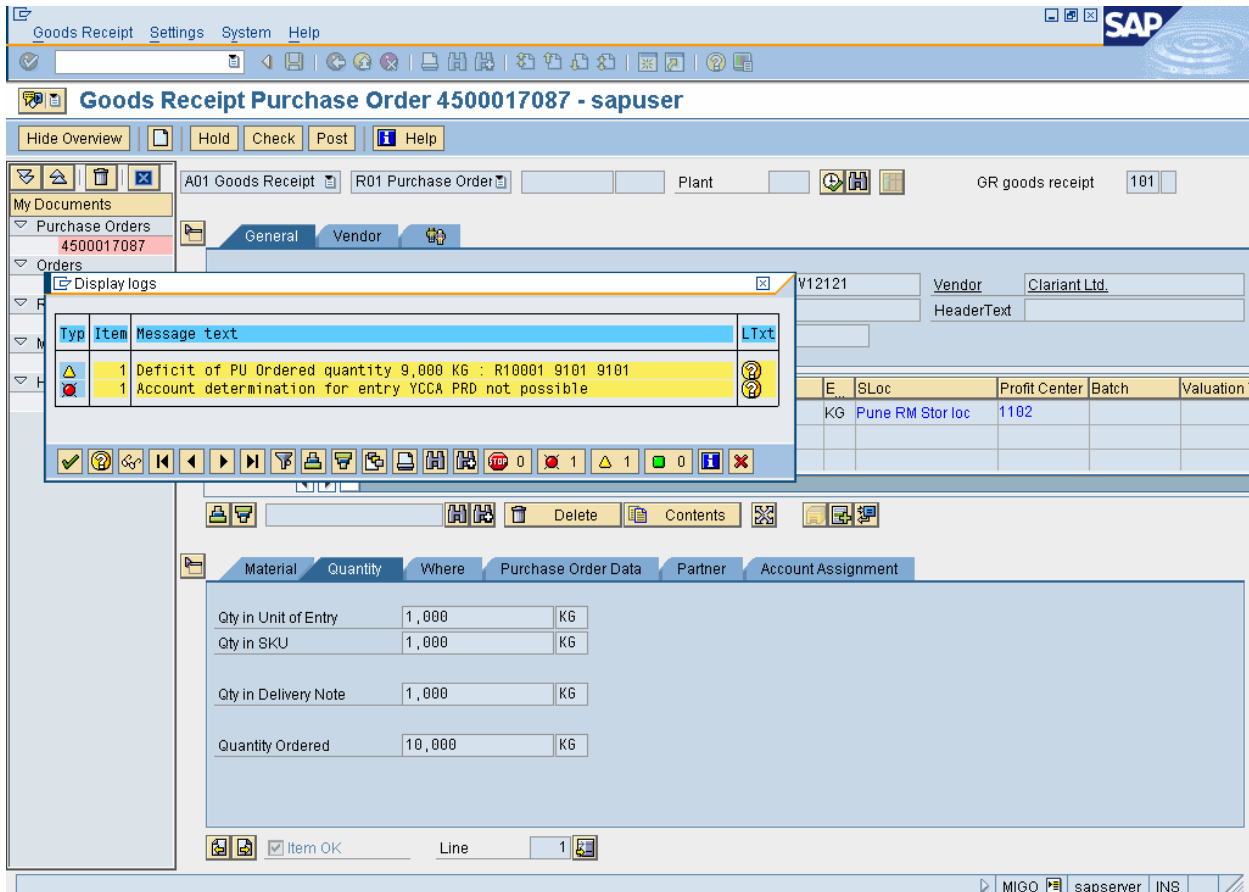
Missing configuration steps are generally pointed out by the SAP system.

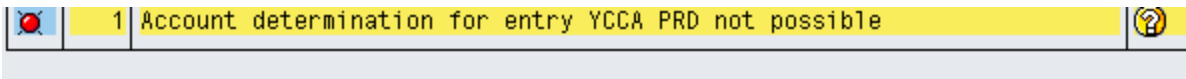
You need to know how to fix these missing configuration steps.


### Case 1:-

**A missing configuration step error can be directly maintained from the error message, provided you have the necessary authorization.**

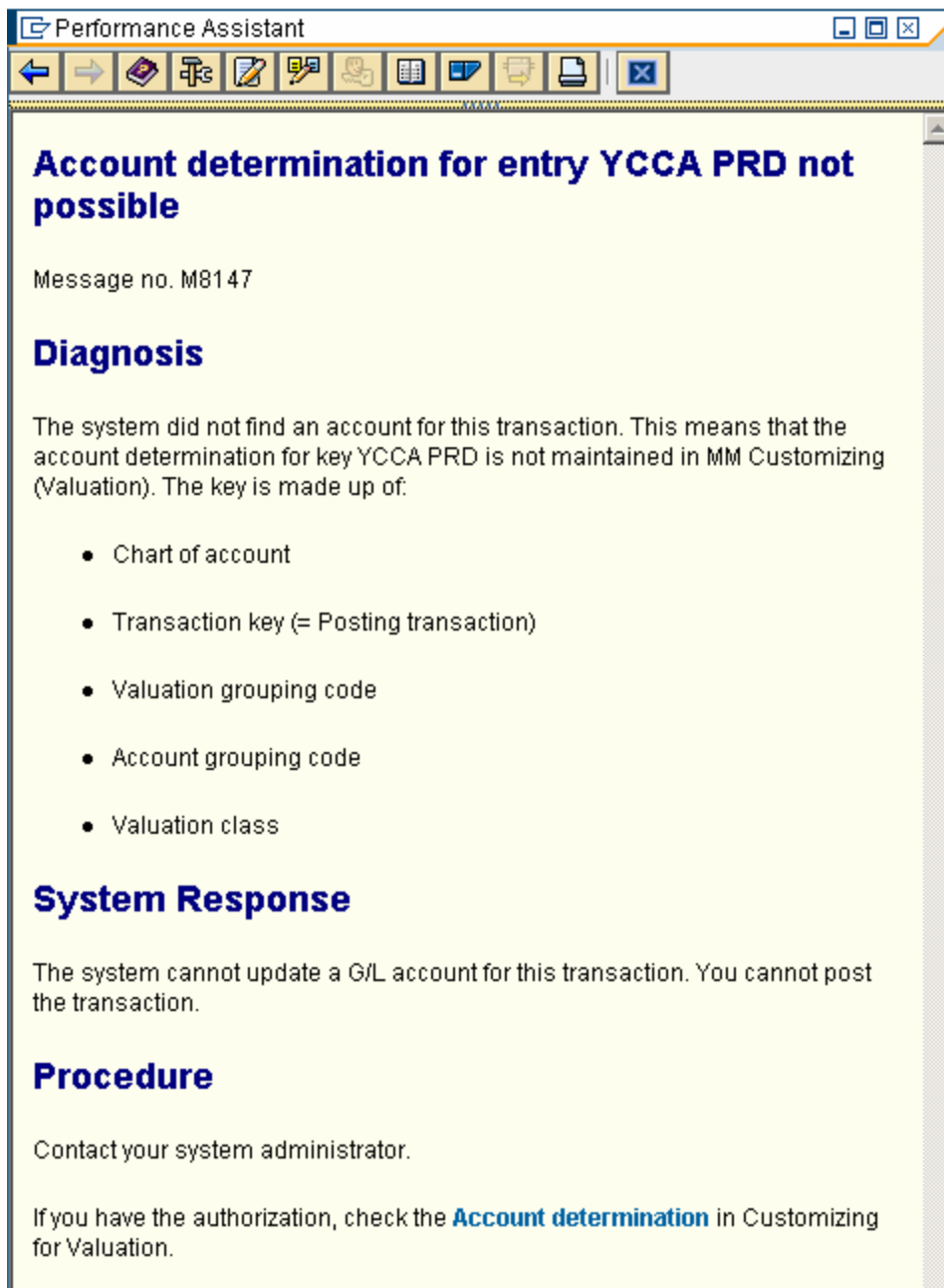
You get the following error message as shown below in red traffic signal:-





Click  next to the error message

You now get a detailed message as shown below:-



**Account determination for entry YCCA PRD not possible**

Message no. M8147

**Diagnosis**

The system did not find an account for this transaction. This means that the account determination for key YCCA PRD is not maintained in MM Customizing (Valuation). The key is made up of:

- Chart of account
- Transaction key (= Posting transaction)
- Valuation grouping code
- Account grouping code
- Valuation class

**System Response**

The system cannot update a G/L account for this transaction. You cannot post the transaction.

**Procedure**

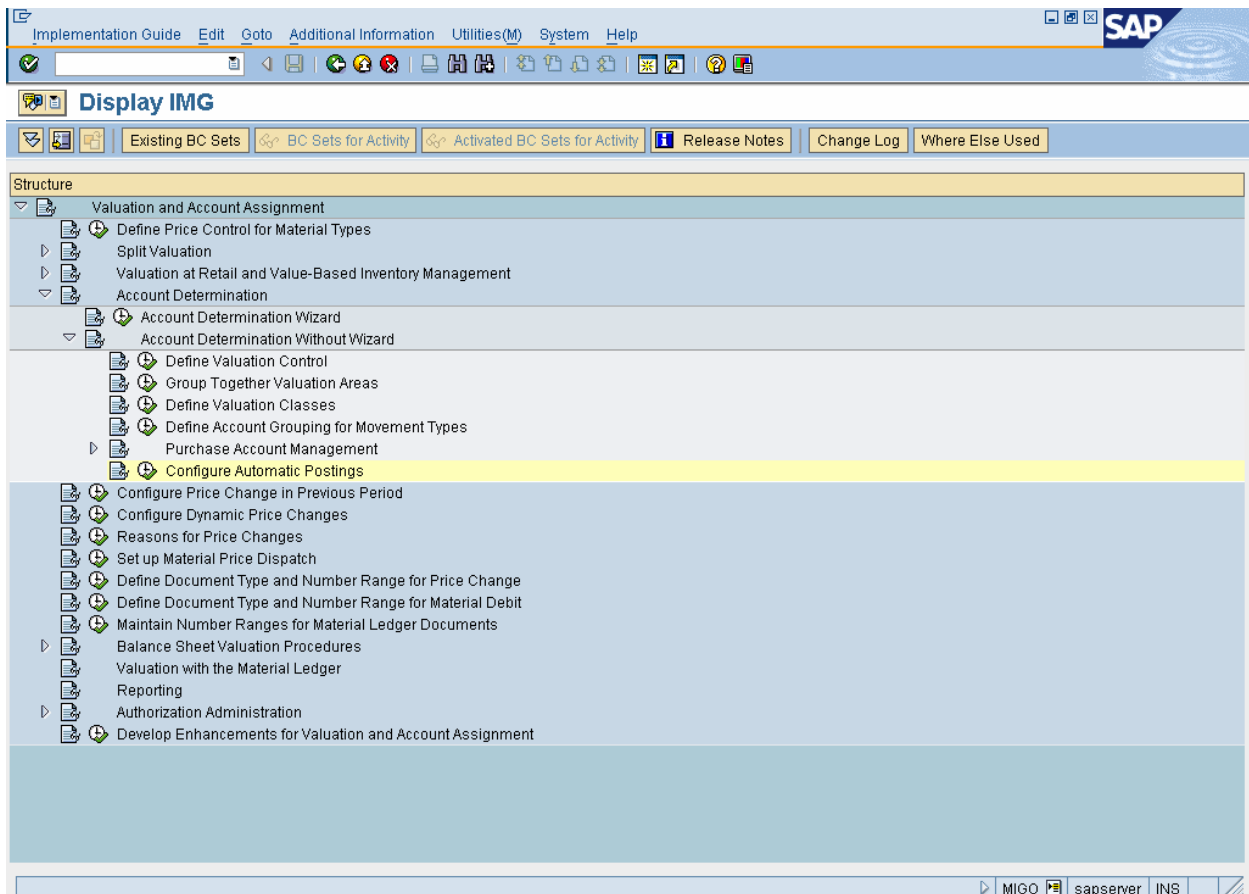
Contact your system administrator.

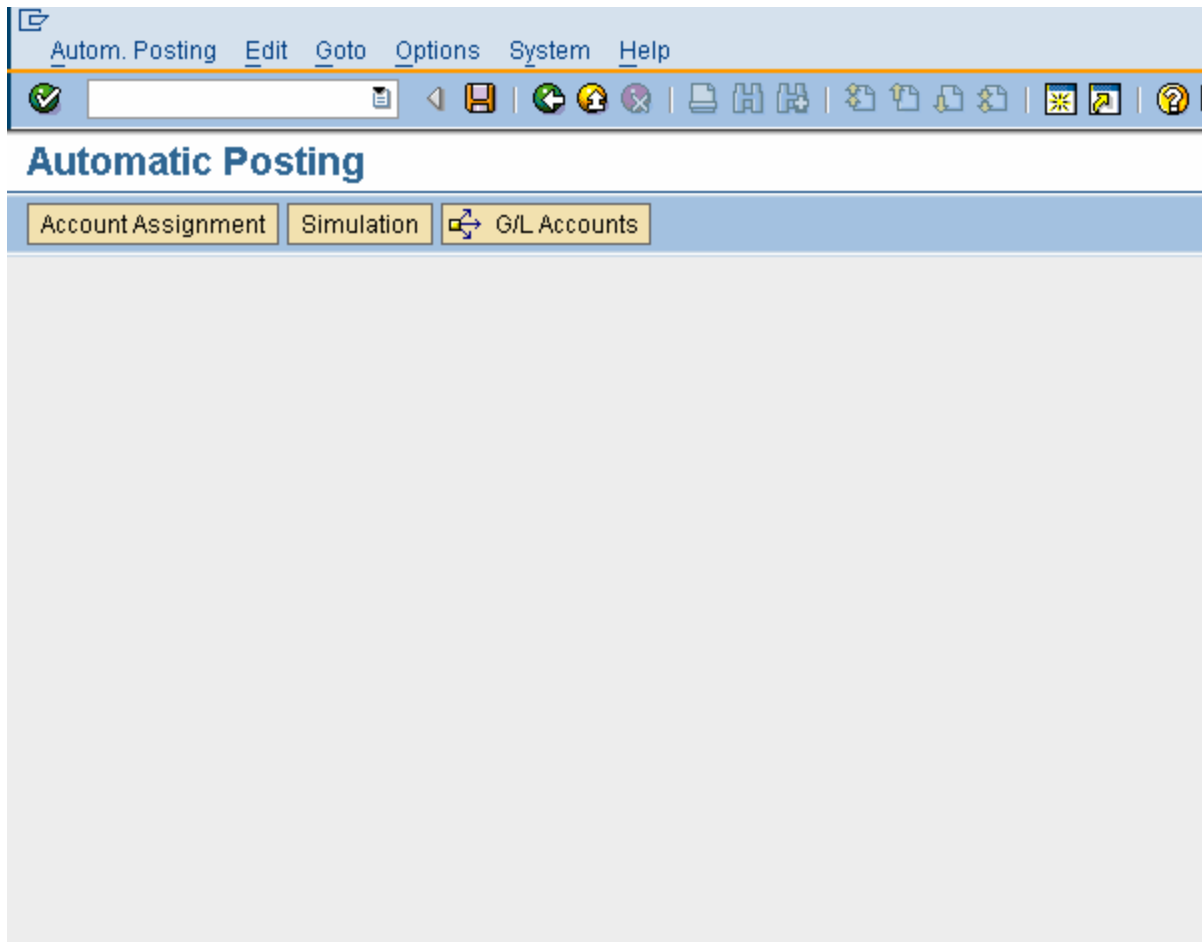
If you have the authorization, check the **Account determination** in Customizing for Valuation.

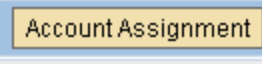
If you have the authorization, check the **Account determination** in Customizing for Valuation.

Click on **Account determination**

**On clicking you directly go in the customizing step where the configuration values needs to be maintained.**





Click 

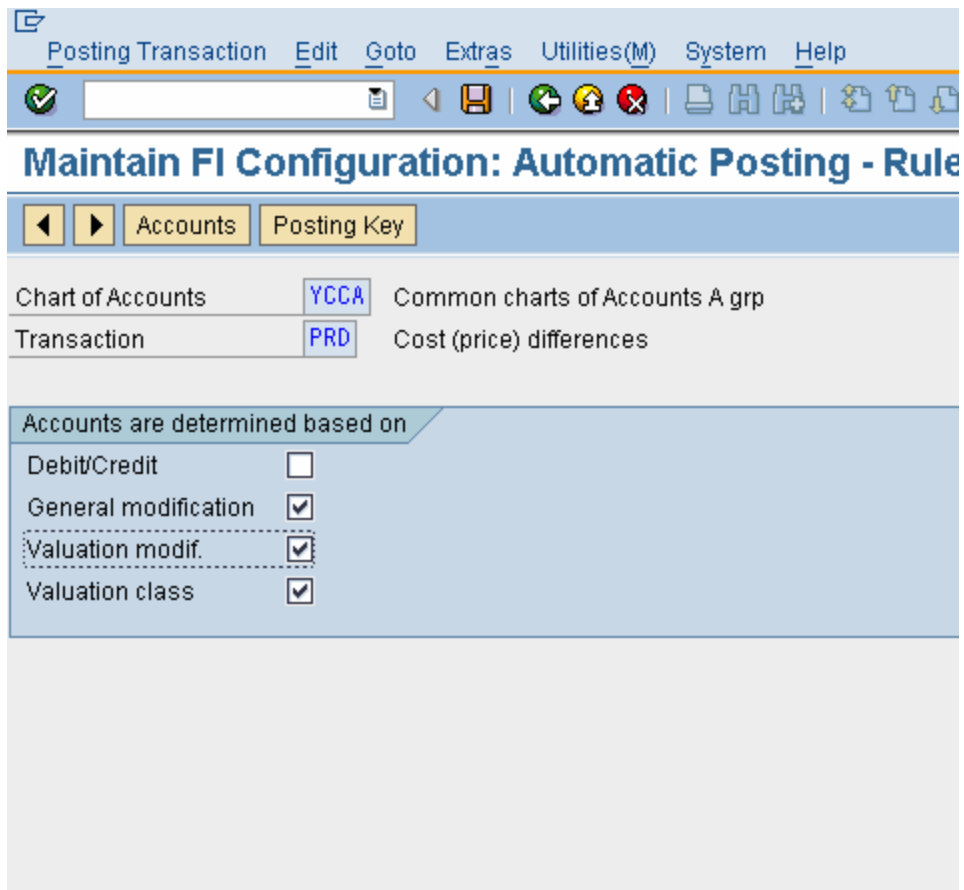
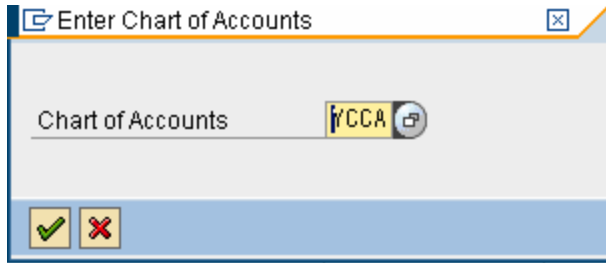
## Maintain FI Configuration: Automatic Posting - Procedures

Group  Materials Management postings (MM)

Description	Transaction	Account determ.
External activity	FRL	<input checked="" type="checkbox"/>
Incidental costs of external activities	FRN	<input checked="" type="checkbox"/>
Offsetting entry for inventory posting	GBB	<input checked="" type="checkbox"/>
Account-assigned purchase order	KBS	<input type="checkbox"/>
MM Exchange Rate Differences	KDG	<input checked="" type="checkbox"/>
Materials management exch.rate diffs	KDM	<input checked="" type="checkbox"/>
MM exchange rate rounding differences	KDR	<input checked="" type="checkbox"/>
Material ledger frm low.levels E/R diff.	KDV	<input checked="" type="checkbox"/>
Consignment payables	KON	<input checked="" type="checkbox"/>
Price diff. offset. entry (cost object)	KTR	<input checked="" type="checkbox"/>
Accruals and defer.acct(material ledger)	LKW	<input checked="" type="checkbox"/>
Prepayment	PPX	<input checked="" type="checkbox"/>
Price Differences from WOff WIP	PRA	<input checked="" type="checkbox"/>
Differences (AVR Price)	PRC	<input checked="" type="checkbox"/>
Cost (price) differences	PRD	<input checked="" type="checkbox"/>
Price Differences (Mat. Ledger, AVR)	PRG	<input checked="" type="checkbox"/>
Price differences (cost object hierarc.)	PRK	<input checked="" type="checkbox"/>
Price Diff. from WIP Written Off (Mat.)	PRM	<input checked="" type="checkbox"/>
Product cost collector price differences	PRP	<input checked="" type="checkbox"/>
Prod.cost coll.price diff. offsett.entry	PRQ	<input checked="" type="checkbox"/>
Material ledger fr.low.levels price dif.	PRV	<input checked="" type="checkbox"/>

Click 

Cost (price) differences	PRD
--------------------------	-----





## Case 2:

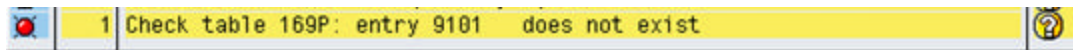
In some cases you are not as lucky as in Case 1. But system nevertheless still gives you an error message as to which table needs to be updated.


See the below example which show configuration step missing:-

The screenshot displays the SAP interface for a Goods Receipt Purchase Order (4500017087). The main window shows the 'General' tab with 'A01 Goods Receipt' and 'R01 Purchase Order' selected. The plant is set to 9101. A 'Display logs' window is open, showing the following error message:

Type	Item	Message text	LText
Warning (Yellow Triangle)	1	Deficit of PU Ordered quantity 9,000 KG : R10001 9101 9101	
Error (Red Circle)	1	Check table 169P: entry 9101 does not exist	

The error message indicates a configuration issue where the entry 9101 in table 169P does not exist. The background interface shows a table with columns for Material, Quantity, Where, Purchase Order Data, Partner, and Account Ass.



Click  next to the error line for more detail.

A screenshot of a "Performance Assistant" window. The title bar says "Performance Assistant" and has standard window controls. Below the title bar is a toolbar with icons for navigation and actions. The main content area has a yellow background and contains the following text:

**Check table 169P: entry 9101 does not exist**

Message no. M7001


**Diagnosis**

In table 169P the entry 9101 is missing.

**Procedure**

Make sure your entries are correct.

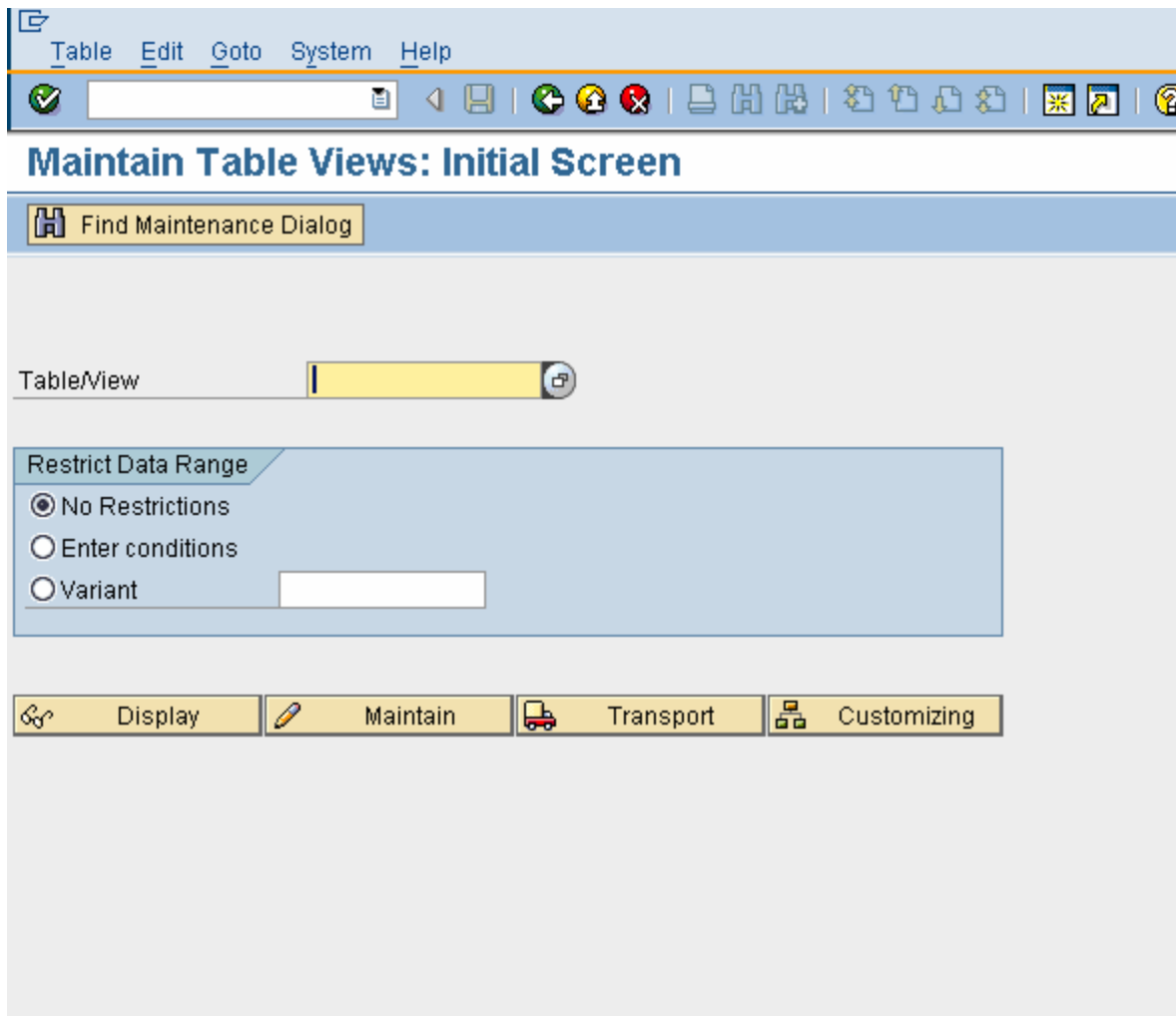
If table has not been maintained correctly, please inform your systems administrator.

In this case the icon  is grayed out and therefore you cannot directly go and maintain the configuration, neither do you get any **highlighted text message to proceed for the rectification.**

Note the down table 169P from the message

**Check table 169P: entry 9101 does not exist**

In another session type in transaction code **SM30** in the command field

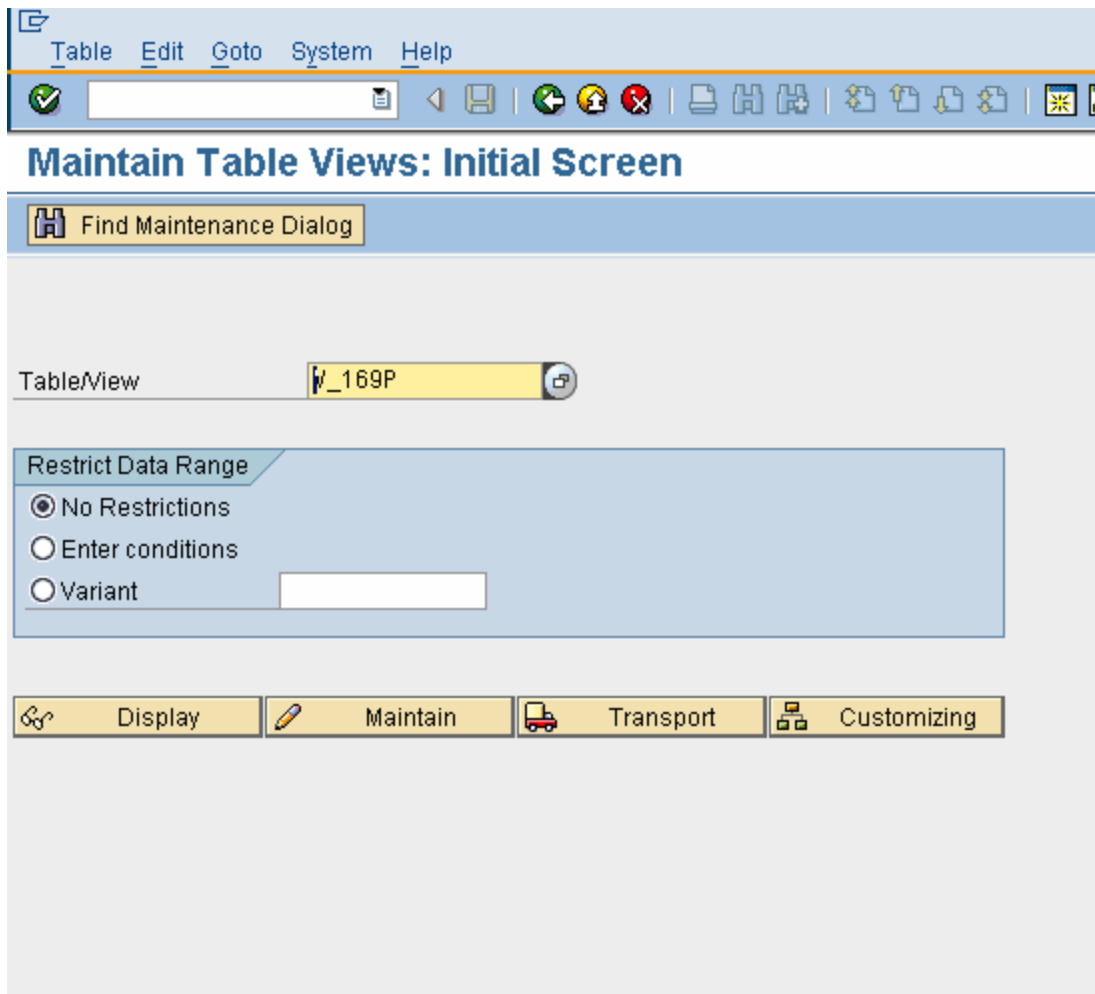


Most of the times you can directly enter this table name in the field

Table/View

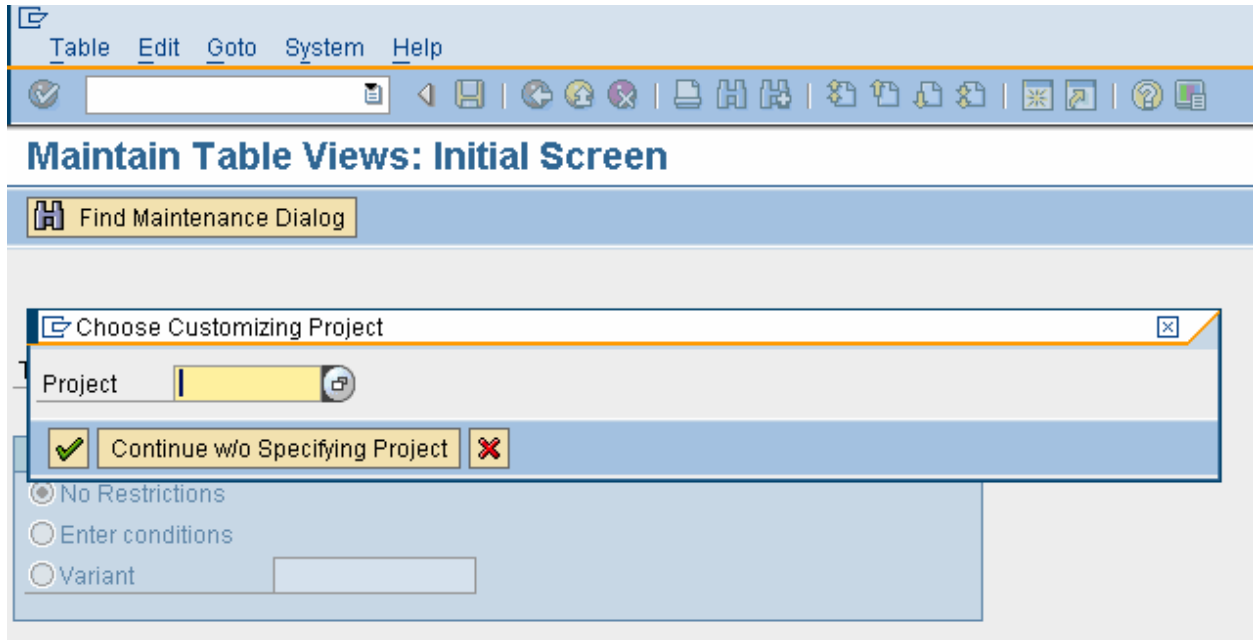
But in case you can get an error that “**No such table exists**” then try prefixing the table name with **V\_169P**

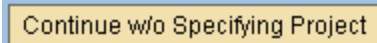
Now update the following:-



The screenshot shows the SAP 'Maintain Table Views: Initial Screen'. At the top, there is a menu bar with 'Table', 'Edit', 'Goto', 'System', and 'Help'. Below the menu is a toolbar with various icons. The main title is 'Maintain Table Views: Initial Screen'. Below the title is a 'Find Maintenance Dialog' button. The main area contains a 'Table/View' field with the value 'V\_169P' entered. Below this is a 'Restrict Data Range' section with three radio buttons: 'No Restrictions' (selected), 'Enter conditions', and 'Variant'. At the bottom, there is a navigation bar with four buttons: 'Display', 'Maintain', 'Transport', and 'Customizing'.

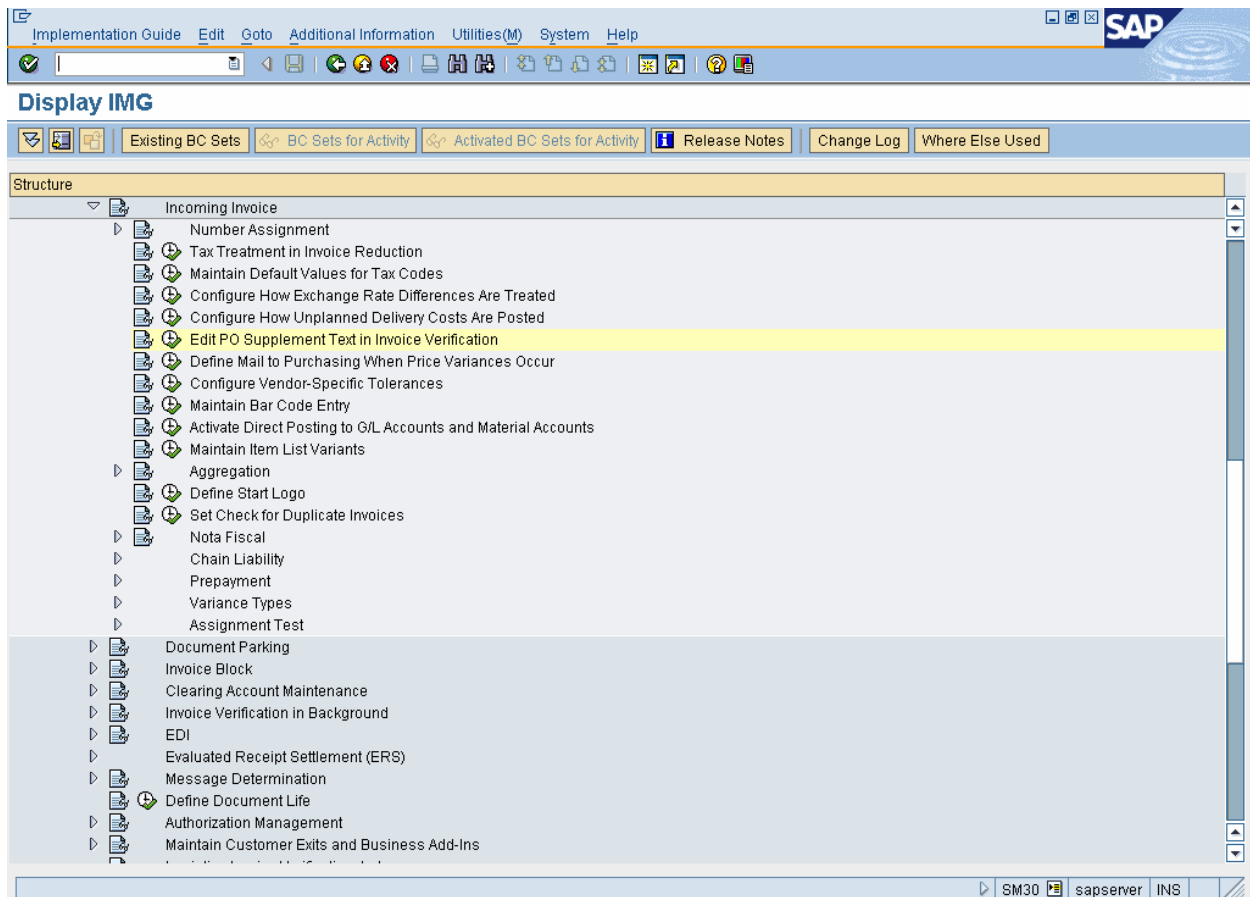
Click  Customizing



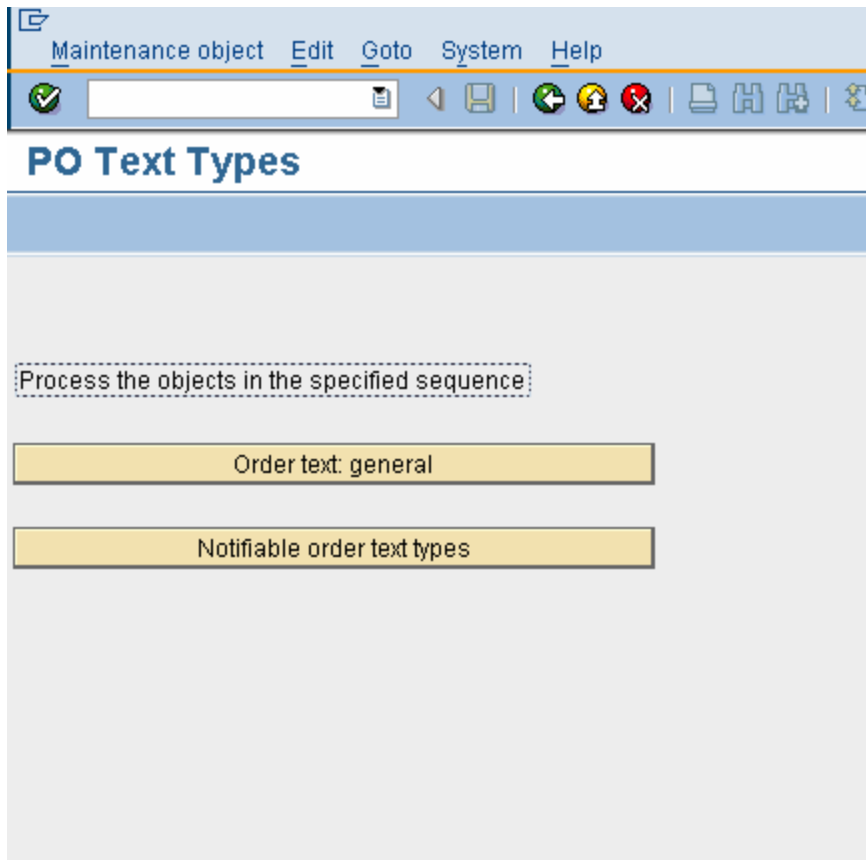
Click  if you do not have any project code.







Now you can update the necessary configuration



### Case 3:

In some rare cases you are not at all lucky as in the earlier 2 cases.

**If a configuration step is missing you will only get an error message, listing a configuration error. No details are available as to what needs to be done, in this case you need to actually go and check the relevant configuration steps.**

**This can be done only if you know the step by step configuration process required for the module.**

**Our SAP FICO Configuration set actually helps you to avoid all the above scenarios and particularly case 3 scenarios.**

**What are you waiting for? Go ahead and place your order for the SAP FICO Configuration Set.**